



Kingdom of Lesotho



Statistical Report
No.14:2023

CRIME STATISTICS REPORT 2022



Bureau of Statistics
PO Box 455
Maseru 100, Lesotho
Tel: +266 22 323 852/ 22 317 715
Fax: +266 22 310 177
E-mail: sed@bos.gov.ls
Website: www.bos.gov.ls

Mission: To coordinate the National Statistical System (NSS) and produce accurate, timely and reliable culturally relevant and internationally comparable statistical data for evidence - based planning, decision making, research, policy, program formulation and monitoring and evaluation to satisfy the needs of users and Producers.

Contents	i
List of Tables.....	ii
List of Figures	iii
1.0 Background.....	1
2.0 Reported Serious Crime Cases.....	2
2.1 Reported Serious Crime Cases in Policing Districts.....	2
2.2 Reported Serious Crime Cases in Regions.....	5
2.3 Reported Serious Cases of Crime by Month.....	6
2.4 Reported Serious Crime Cases by Quarter.....	7
2.5 Types of Reported Serious Crime Cases by Quarter.....	8
3.0 Trend in Reported Serious Crime Cases, 2017 - 2021	9
4.0 Summary.....	10
5.0 Reported General Cases of Crime	11
5.1 Types of Reported General Crime Cases.....	11
5.2 Reported General Crime Cases in Policing Districts	11
5.3 Reported General Cases of Crime in Regions	14
5.4 Reported General Crime Cases by Month.....	16
5.5 Reported General Crime Cases by Quarter	19
5.6 Types of Reported General Cases of Crime by Quarter	19
6.0 Trend in Reported General Crime Cases, 2017 - 2021.....	21
7.0 Summary.....	22
8.0 Annex 1: Grouping of Cases of Crime.....	23
Group 1: Serious Cases of Crime	23
Group 2: General Crime Cases	23

List of Tables

Table 2.1: Number and Percentage Distribution of Reported Serious Cases of Crime – 2021	2
Table 2.2: Percentage Distribution of Reported Serious Cases of Crime by Policing Districts – 2021	4
Table 2.3: Percentage Distribution of Types of Reported Serious Cases of Crime by Region – 2021	6
Table 2.4: Percentage Distribution of Types of Reported Serious Cases of Crime by Month - 2021	7
Table 2.5: Percentage Distribution of Reported Serious Cases by Quarter – 2021	8
Table 5.1: Number and Percentage Distribution of Reported General Cases of Crime – 2021	11
Table 5.2: Percentage Distribution of Reported General Cases of Crime by Policing Districts – 2021	13
Table 5.3: Percentage Distribution of Types of Reported General Cases of Crime by Region - 2021	15
Table 5.4: Percentage Distribution of Types of Reported General Cases of Crime by Month - 2021	18
Table 5.5: Percentage Distribution of Reported General Cases by Quarter – 2021	20

List of Figures

Figure 2.1: Percentage Distribution of Reported Serious Cases of Crime by Region – 2021	5
Figure 2.2: Percentage Distribution of Reported Serious Cases of Crime by Month – 2021	6
Figure 2.3: Percentage Distribution of Reported Serious Cases of Crime by Quarter – 2021	8
Figure 3.1: Number of Reported Serious Cases of Crime from the Year 2016 to 2021..	9
Figure 5.1: Percentage Distribution of Reported General Cases of Crime by Region - 2021	14
Figure 5.2: Percentage Distribution of Reported General Cases of Crime by Month – 2021	16
Figure 5.3: Percentage Distribution of Reported General Cases of Crime by Quarter – 2021	19
Figure 6.1: Number of Reported General Cases of Crime from the Year 2016 to 2021.	21

1.0 Background

The Bureau of Statistics (BOS) through Socio - Economic Statistics Division is mandated to report on Crime Statistics in Lesotho. The Lesotho Mounted Police Services (LMPS) collects the reported cases of crime across the country. The data is then forwarded to BOS to be compiled, tabulated and analysed and a yearly crime statistics report is published. The main focus of this report is on crime cases reported across the country from the 1st January to 31st December 2022 and not consider any actions taken thereafter.

The LMPS classified all the reported cases into two main groups, namely; serious and general cases. In 2022, the reported serious cases of crime comprised of Armed robbery, Assault GBH (Assault with intend to cause Grievous Bodily Harm), Attempted murder, Car theft, Fraud, House Breaking, Human Trafficking, Murder, Robbery, Sexual Offence and Stock theft. The cases reported and categorized under general cases of crime comprised of Arms & ammunition, Arson, Assault Common, Child protection Act, Internal Security, Malicious Damage, Public Health (covid-19) Regulation, Road Traffic Act, Theft by False Pretence, Theft Common, Theft from Car, Threats of Violence, and Others.

It is of an utmost importance to note that the crime statistics report unlike other statistical reports entails in particular the reported crimes and not persons directly involved in those crimes. It is also important to note that Road Traffic Offence cases are no longer part of this report.

2.0 Reported Serious Crime Cases

The serious crime cases reported in 2022 comprised of Armed robbery, Assault GBH (Assault with intend to cause Grievous Bodily Harm), Attempted murder, Car theft, Fraud, House Breaking, Human Trafficking, Murder, Robbery, Sexual Offence and Stock theft.

Types of Reported Serious Crime Cases

The types of serious cases of crime reported in 2022 are discussed in this section and table 2.1 below presents the number and percentage distribution of serious cases of crime reported throughout the year. As presented from the table, a total of 11,939 serious crime cases were reported in 2022. Housebreaking constituted the largest percentage (36.9), followed by Stock theft and Sexual offence with 18.3 and 11.6 percent respectively. Human trafficking reported the least percentage share of 0.2 percent.

Table 2.1: Number and Percentage Distribution of Reported Serious Cases of Crime – 2022

Reported Serious Crime Cases	Number	Percent
Armed robbery	475	4.0
Assault GBH	863	7.2
Attempted Murder	298	2.5
Car theft	171	1.4
Fraud	507	4.2
House Breaking	4,410	36.9
Human Trafficking	19	0.2
Murder	944	7.9
Robbery	689	5.8
Sexual Offence	1,383	11.6
Stock Theft	2,180	18.3
Total	11,939	100.0

2.1 Reported Serious Crime Cases in Policing Districts

The LMPS classified their operational areas into 11 policing districts namely, Maseru Urban, Maseru Rural, Thaba-Tseka, Berea, Leribe, Botha-Bothe, Mokhotlong, Mafeteng, Mohale's Hoek, Quthing and Qacha's Nek.

This section provides an overview on how serious crime cases were reported in various policing districts across the country. The percentage distribution of serious cases of crime reported in policing districts is shown in table 2.2. In overall, Maseru Urban reported highest percentage of reported serious crime cases with 29.9 percent. This was followed by Leribe and Maseru Rural with 14.8 and 13.2 percent respectively while Quthing reported the least percentage of 2.3 percent.

For reported Armed robbery cases, almost half (51.2 percent) of the reported cases were in Maseru Urban. This was followed by Leribe and Maseru Rural with 20.0 and 9.3 percent respectively. Quthing and Mokhotlong reported the least proportion of 0.4 percent each.

The same sequence is observed with reported Housebreaking cases, where Maseru Urban reported the highest (37.3 percent). Leribe and Maseru Rural followed with 16.2 and 12.9 percent respectively. The least percentage was observed in Quthing with 1.6 percent.

For reported Attempted murder cases, Maseru Urban showed the highest lead with 36.2 percent. Berea and Mafeteng followed with 13.8 percent each while Maseru Rural reported 10.7 percent. Qacha's nek reported the least proportion of 1.3 percent.

The bigger percentage (69.6 percent) of Car theft cases were reported in Maseru Urban, followed by Leribe and Mafeteng with 11.7 and 6.4 percent respectively. No Car theft cases reported from Thaba- Tseka, Quthing and Qacha's nek districts.

For reported Stock theft cases, it was observed that Maseru Rural reported the highest proportion of 19.7 percent. Leribe and Thaba-tseka reported the proportion of 16.3 and 13.1 percent respectively. Mokhotlong reported the proportion of 12.9 while Quthing reported the least share of 0.9 percent.

Table 2.2: Percentage Distribution of Reported Serious Cases of Crime by Policing Districts – 2022

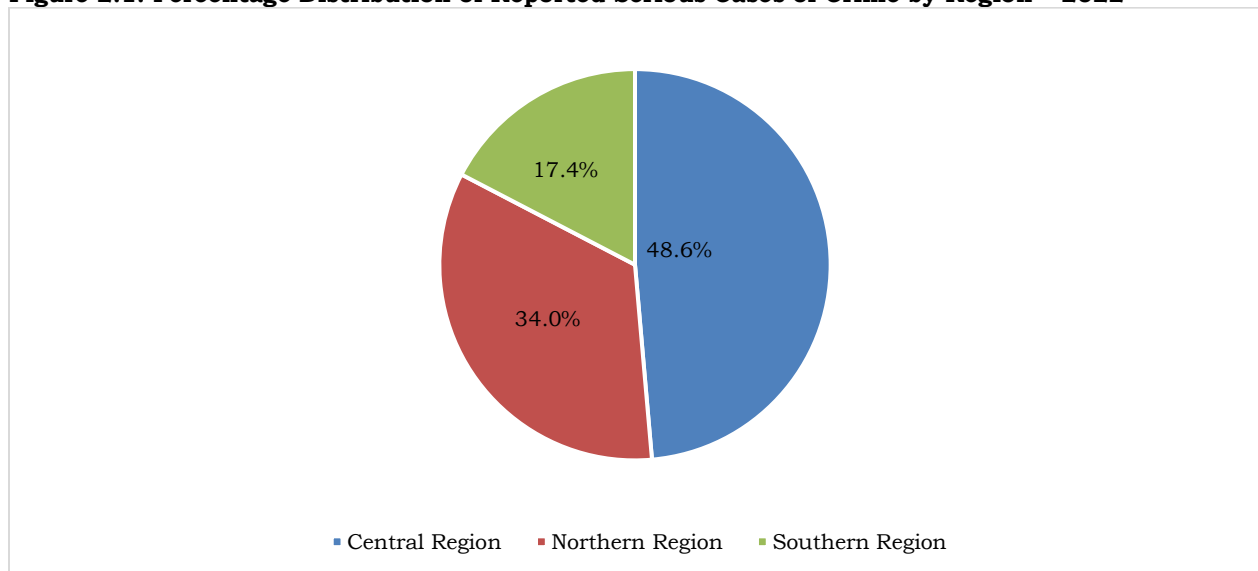
Policing district	Armed robbery	Assault GBH	Attempted Murder	Car theft	Fraud	House Breaking	Human Trafficking	Murder	Robbery	Sexual Offence	Stock Theft	Total
Maseru Urban	51.2	15.6	36.2	69.6	65.1	37.3	15.8	19.2	55.0	23.7	4.6	29.9
Maseru Rural	9.3	8.0	10.7	5.8	1.8	12.9	10.5	17.6	8.1	13.4	19.7	13.2
Thaba-Tseka	1.3	8.3	4.0	0.0	3.4	2.8	5.3	5.2	1.9	5.9	13.1	5.5
Berea	4.8	7.8	13.8	4.1	1.6	7.1	5.3	10.3	6.7	9.6	12.3	8.4
Leribe	20.0	12.6	9.1	11.7	8.9	16.2	26.3	16.9	10.3	12.1	16.3	14.8
Botha-Bothe	2.7	7.9	3.7	0.6	3.9	4.2	5.3	4.2	2.0	5.6	9.8	5.4
Mokhotlong	0.4	5.6	2.3	1.2	6.1	3.1	10.5	4.8	1.7	5.5	12.9	5.4
Mafeteng	6.9	11.4	13.8	6.4	3.6	7.5	5.3	11.7	6.4	7.9	4.9	7.6
Mohale's Hoek	2.1	10.4	3.4	0.6	0.8	4.9	5.3	3.0	3.0	6.9	1.7	4.3
Quthing	0.4	5.8	1.7	0.0	2.4	1.6	0.0	3.0	3.5	4.3	0.9	2.3
Qacha's Nek	0.8	6.6	1.3	0.0	2.6	2.4	10.5	4.2	1.3	5.1	3.8	3.2
Total	100.0	100.0	100.0	100.0	100.0	100.0	100.0	100.0	100.0	100.0	100.0	100.0

2.2 Reported Serious Crime Cases in Regions

The LPMS categorized the Police Stations into three regions, namely; Central Region, Northern Region and Southern Region. Central Region comprises of Maseru Urban, Maseru Rural and Thaba-Tseka, the Northern Region comprises of Berea, Leribe, Botha-Bothe and Mokhotlong while the Southern Region comprises of Mafeteng, Mohale's Hoek, Quthing and Qacha's Nek.

This section addresses the reported serious cases of crime based on Regions they were reported in. Hence, the percentage distribution of reported serious cases of crime in these three regions is displayed in Figure 2.1. As depicted by the figure, about 48.6 percent of the serious cases were reported in Central Region whilst the proportion of 34.0 and 17.4 percent were reported in Northern and Southern Regions respectively.

Figure 2.1: Percentage Distribution of Reported Serious Cases of Crime by Region – 2022



Additionally, the section further explains on the types of serious crime cases reported in regions. Hence, Table 2.3 presents the percentage distribution of types of serious crime cases by Regions. As indicated by the table, generally, Housebreaking cases were the most reported serious crime in all the regions (40.3, 33.2 and 34.8 percent for Central, Northern and Southern regions respectively).

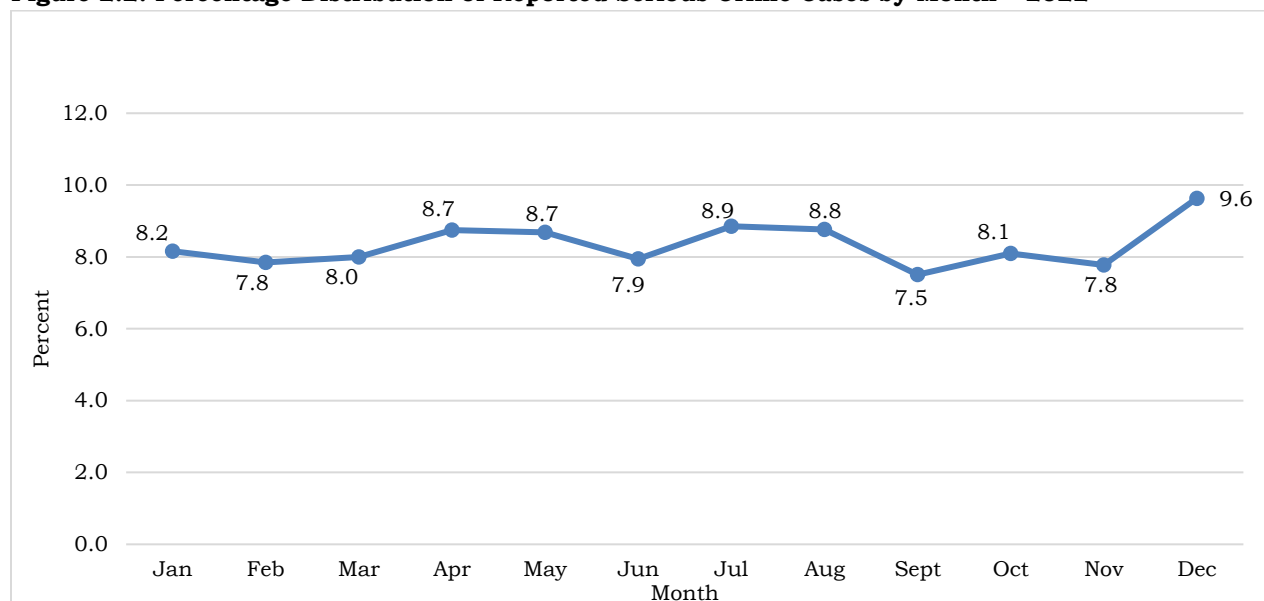
Besides, Stock theft cases reported the proportions of 27.6, 14.0 and 11.9 percent for Northern, Central and Southern regions respectively. Sexual offence crime cases reported 16.1 percent for Southern region. Human trafficking cases reported the least (0.2 percent) for both Northern and Southern regions and 0.1 percent in Central region.

Table 2.3: Percentage Distribution of Types of Reported Serious Crime Cases by Region – 2022

Reported Serious Crime Cases	Central Region	Northern Region	Southern Region
Armed robbery	5.0	3.3	2.4
Assault GBH	4.8	7.2	14.2
Attempted Murder	2.6	2.1	2.9
Car theft	2.2	0.7	0.6
Fraud	6.1	2.6	2.3
House Breaking	40.3	33.2	34.8
Human Trafficking	0.1	0.2	0.2
Murder	6.8	8.4	9.9
Robbery	7.7	3.5	4.7
Sexual Offence	10.3	11.2	16.1
Stock Theft	14.0	27.6	11.9
Total	100.0	100.0	100.0

2.3 Reported Serious Cases of Crime by Month

The reported serious crime cases were further analysed by month in which they were reported. Thus, Figure 2.2 below demonstrates the percentage distribution of the reported serious crime cases by Month. As illustrated by the figure, the highest percentage (9.6 percent) of serious crime cases was reported in the month of December. The proportion of 8.9 and 8.8 percent was reported in July and August respectively while 8.7 percent was reported for both April and May. The lowest proportion (7.5 percent) of Serious crime cases was reported during the month of September.

Figure 2.2: Percentage Distribution of Reported Serious Crime Cases by Month – 2022

The section further elaborates on the types of serious cases by month in which they were reported. Table 2.4 presents the percentage distribution of the types of reported serious crime cases by Month. As revealed by the table, the types of serious crime reported mostly in all the months of the 2022 constituted House Breaking, Stock Theft and Sexual Offence cases.

With regard to reported Housebreaking cases, a is slight difference on Housebreaking cases reported throughout the year, and September month reported the highest proportion (42.3 percent) while August month reported the least with 34.0 percent.

For reported Sexual offence, March reported bigger percentage part with 14.2 percent while the least proportion cases were reported in November month (9.5 percent).

Table 2.4: Percentage Distribution of Types of Reported Serious Crime Cases by Month – 2022

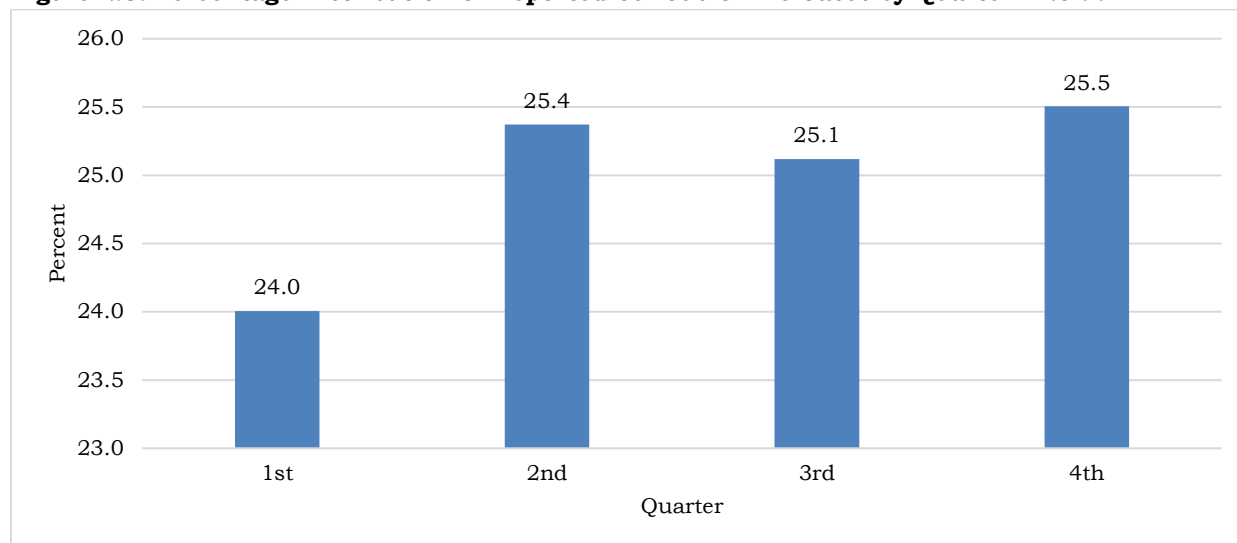
Reported Serious Crime Cases	Jan	Feb	Mar	Apr	May	Jun	Jul	Aug	Sept	Oct	Nov	Dec
Armed robbery	2.2	3.1	2.3	4.2	3.5	3.9	4.4	6.0	3.3	5.2	4.5	4.7
Assault GBH	10.7	8.1	8.6	6.3	5.1	6.5	5.3	7.3	7.7	6.9	6.5	8.0
Attempted Murder	3.7	2.3	3.0	3.0	2.1	2.5	2.3	1.5	2.3	3.0	2.0	2.2
Car theft	1.1	1.2	1.8	1.8	0.3	1.7	2.4	0.9	0.8	1.1	2.2	1.9
Fraud	4.1	4.7	4.3	3.3	4.2	5.1	4.6	5.6	3.7	3.2	7.5	1.2
House Breaking	35.1	34.8	34.5	40.3	38.3	33.9	36.0	34.0	42.3	40.4	39.1	35.2
Human Trafficking	0.1	0.2	0.2	0.4	0.3	0.1	0.1	0.0	0.2	0.3	0.0	0.0
Murder	9.9	7.4	6.8	6.9	8.1	6.3	8.1	8.7	7.4	7.2	6.7	10.7
Robbery	6.2	6.0	6.4	6.0	5.4	6.9	7.3	4.2	2.9	5.8	6.1	5.9
Sexual Offence	13.3	12.7	14.2	11.7	11.3	12.1	10.0	11.1	9.7	11.1	9.5	12.2
Stock Theft	13.7	19.5	17.9	16.1	21.4	21.0	19.5	20.7	19.6	15.7	15.8	18.0
Total	100.0	100.0	100.0	100.0	100.0	100.0	100.0	100.0	100.0	100.0	100.0	100.0

2.4 Reported Serious Crime Cases by Quarter

This section presents the quarterly statistics on Serious crime cases reported in 2022. A one-year period that began on the 1st of January and ends on the 31st December was used to determine four quarters of the year.

Percentage distribution of reported serious crime cases by quarter is portrayed in Figure 2.3. As shown from the figure, there is a slight difference of serious crime cases reported across four quarters of the 2022 year. The fourth quarter reported the largest (25.5 percent) proportion followed by second and third quarters with the proportion of 25.4 and 25.1 percent respectively. About 24.0 percent were reported in the first quarter.

Figure 2.3: Percentage Distribution of Reported Serious Crime Cases by Quarter – 2022



2.5 Types of Reported Serious Crime Cases by Quarter

The focus of this section is to analyze the types of reported serious crime cases by quarter. The percentage distribution of serious cases reported by quarter is presented in table 2.5 below. It was observed from the table that the top leading serious crime cases reported throughout all quarters of 2022 year were House Breaking, Stock Theft, and Sexual Offence. On the contrary, the serious crime cases reported the least proportions throughout the 2022 quarters were that of Human Trafficking, Car theft and Attempted Murder.

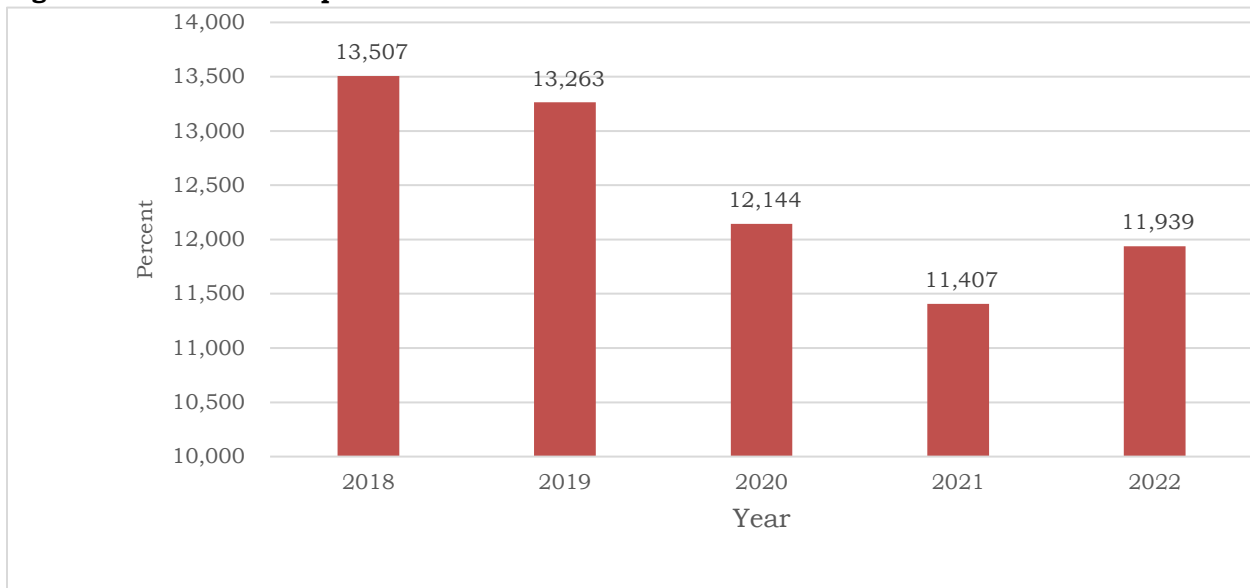
Table 2.5: Percentage Distribution of Reported Serious Cases by Quarter – 2022

Reported Serious Crime Cases	1st Quarter	2nd Quarter	3rd Quarter	4th Quarter
Armed robbery	2.5	3.9	4.7	4.8
Assault GBH	9.1	6.0	6.7	7.2
Attempted Murder	3.0	2.5	2.0	2.4
Car theft	1.4	1.3	1.4	1.7
Fraud	4.4	4.2	4.7	3.8
House Breaking	34.8	37.6	37.2	38.1
Human Trafficking	0.2	0.3	0.1	0.1
Murder	8.0	7.1	8.1	8.4
Robbery	6.2	6.1	4.9	5.9
Sexual Offence	13.4	11.7	10.3	11.0
Stock Theft	17.0	19.4	19.9	16.6
Total	100.0	100.0	100.0	100.0

3.0 Trend in Reported Serious Crime Cases, 2018 - 2022

This section examines the level and trend in reported serious crime cases from 2018 to 2022. Thus, Figure 3.1 depicts the number of reported serious crime cases from the year 2018 to 2022. As shown by the figure, the proportion of reported serious crimes declined by 1.8 percent from 2018 to 2019. The proportion considerably declined by 9.2 from 2019 to 2020. The graphic representation further illustrates a decline from 2020 to 2021 by 6.5 percent. However, the proportion of reported serious crime cases slightly increased by 4.5 percent in 2021 to 2022.

Figure 3.1: Number of Reported Serious Crime Cases from the Year 2018 to 2022



4.0 Summary

A total of 11,939 serious crime cases were reported from the 1st January to 31st December, 2022. These reported serious crime cases comprised of Armed robbery, Assault GBH (Assault with intend to cause Grievous Bodily Harm), Attempted murder, Car theft, Fraud, House Breaking, Human Trafficking, Murder, Robbery, Sexual Offence and Stock theft.

Amongst them all, Housebreaking, Stock theft and Sexual offence cases constituted majority of reported serious crimes cases in 2022. The serious cases of crime were reported mostly in Maseru Urban, Leribe and Maseru Rural. Consequently, Central Region reported the majority of serious crime cases. In addition, majority of serious crime cases were reported in December, resulting in Fourth Quarter of the year reporting majority of serious crime cases. There was an increase in number of reported serious crime cases from 2021 to 2022.

5.0 Reported General Cases of Crime

General crime cases reported in 2022 comprises of Arms & ammunition, Arson, Assault Common, Child protection Act, Internal Security, Malicious Damage, Public Health (covid-19) Regulation, Road Traffic Act, Theft by False Pretense, Theft Common, Theft from Car, Threats of Violence, and Others.

5.1 Types of Reported General Crime Cases

This section discusses the General crime cases reported in 2022. Hence, the number and percentage distribution of General crime cases reported in 2022 is presented in table 5.1. As shown by the table, a total of 16,168 General crime cases were reported in 2022. Of all the 16,168 General crime cases reported, Assault common cases constituted the highest percentage (28.1 percent). Cases of Theft common and Road Traffic Act followed with the proportions of 27.1 and 17.9 percent respectively. The remaining General crime cases reported in 2021 ranged from 0.2 to 8.4 percent with Public Health (covid-19) Regulation constituting the least percentage of 0.2 percent.

Table 5.1: Number and Percentage Distribution of Reported General Cases of Crime – 2022

Reported General Crime Cases	Number	Percent
Arms & Ammunition	172	1.1
Arson	193	1.2
Assault Common	4,546	28.1
Internal security	202	1.2
Malicious Damage to Property	1,365	8.4
Public Health (Covid 19) Regulations	40	0.2
Road Traffic Act	2,901	17.9
Theft by False Pretenses	358	2.2
Theft Common	4,382	27.1
Theft from car	458	2.8
Threats of violence	300	1.9
Other	1,251	7.7
Total	16,168	100.0

5.2 Reported General Crime Cases in Policing Districts

The overall idea on how General crime cases were reported in different policing districts is discussed in this section. Hence, table 5.2 depicts the percentage distribution of General crime cases reported in policing districts. As shown by the table, Maseru Urban reported the largest proportion (37.5 percent) of General crime cases. Leribe and Maseru Rural followed with the proportions of 14.2 and 9.6 percent respectively. The remaining policing districts reported General crime cases ranging from 1.9 to 7.6 percent with Quthing with the least proportion of 1.8 percent.

The same pattern is observed for Assault Common cases where, Maseru Urban reported the highest (31.8 percent) proportion. Leribe and Maseru Rural followed with the proportions of 14.9 and 12.8 percent respectively. Berea reported the proportion of 9.3 percent while Qacha's nek reported the least proportion of 2.5 percent.

For reported Road Traffic Act crime cases, Maseru Urban reported the largest proportion (43.0 percent). Leribe and Berea followed with the proportions of 13.7 and 10.7 percent respectively. Quthing reported the least percentage (0.3 percent) of Road Traffic Act cases.

However, the bigger proportion of reported Arms & ammunition cases was reported in Maseru Rural (16.3 percent). This was followed by Thaba-Tseka and Mokhotlong with the proportions of 14.0 percent each. Leribe reported the proportion of 13.4 percent while Maseru Urban did not report any cases of Arms & ammunition.

It was further observed that Maseru Rural reported 19.3 percent of Internal security cases followed by Thaba-Tseka and Leribe with the proportions of 17.3 and 16.8 percent respectively. Berea and Mafeteng reported 11.9 and 11.4 percent. Quthing did not report any Internal security cases.

For reported Public Health (Covid 19 Regulations), almost half (55.0 percent) of the proportion was reported in Maseru Urban. Mokhotlong and Qacha's nek followed with the proportions of 22.5 and 15.0 percent respectively. Berea, Leribe and Mafeteng reported the proportions of 2.5 percent each while the remaining policing districts did not report any Public Health (Covid 19 Regulations).

For Threats of violence cases, Maseru Urban reported the highest percentage (34.3 percent), followed by Leribe and Mokhotlong with the proportions of 15.0 and 13.3 percent respectively. Botha-Bothe did not report any Threats of violence cases.

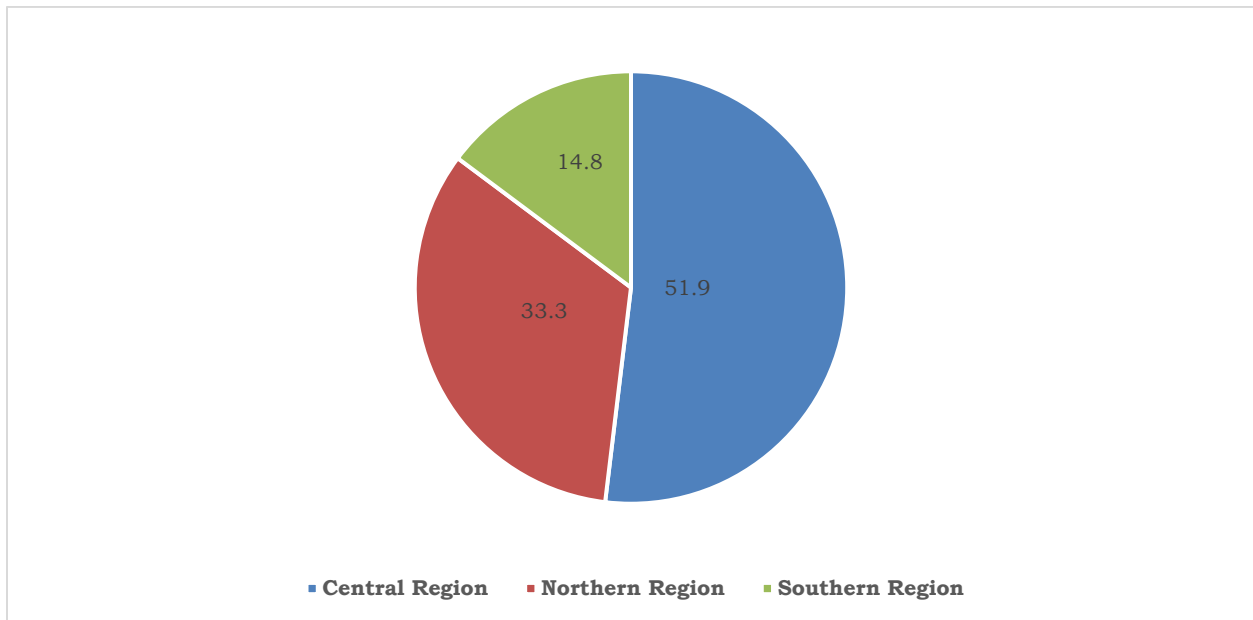
Table 5.2: Percentage Distribution of Reported General Cases of Crime by Policing Districts – 2022

Reported General Crime Cases	Arms & Ammunition	Arson	Assault Common	Internal security	Malicious Damage to Property	Public Health (Covid 19) Regulations	Road Traffic Act	Theft by False Pretenses	Theft Common	Theft from car	Threats of violence	Other	Total
Maseru Urban	0.0	9.3	31.8	6.9	42.3	55.0	43.0	43.3	42.2	55.7	34.3	30.3	37.5
Maseru Rural	16.3	16.1	12.8	19.3	10.8	0.0	8.6	5.3	7.0	2.6	9.0	8.6	9.6
Thaba-Tseka	14.0	11.4	4.7	17.3	4.9	0.0	4.0	7.0	3.4	1.1	6.3	8.1	4.8
Berea	8.1	10.9	9.3	11.9	9.5	2.5	10.7	7.0	6.8	4.1	8.0	5.1	8.4
Leribe	13.4	17.1	14.9	16.8	11.7	2.5	13.7	16.2	14.9	14.2	15.0	11.8	14.2
Botha-Bothe	11.0	5.7	4.8	2.0	4.5	0.0	4.8	2.8	5.1	10.3	0.0	7.8	5.1
Mokhotlong	14.0	6.2	6.8	10.9	4.0	22.5	2.4	0.0	4.9	5.7	13.3	9.8	5.6
Mafeteng	9.9	9.3	5.1	11.4	5.2	2.5	7.4	14.0	10.3	3.5	6.3	9.6	7.6
Mohale's Hoek	7.6	5.2	4.0	0.5	3.8	0.0	2.9	3.6	2.9	1.5	6.3	4.6	3.5
Quthing	2.3	5.7	3.3	0.0	1.7	0.0	0.3	0.0	1.4	0.0	1.3	2.4	1.8
Qacha's Nek	3.5	3.1	2.5	3.0	1.6	15.0	2.1	0.8	1.1	1.3	0.0	2.0	1.9
Total	100.0	100.0	100.0	100.0	100.0	100.0	100.0	100.0	100.0	100.0	100.0	100.0	100.0

5.3 Reported General Cases of Crime in Regions

This section enlightens on General crime cases reported based on the regions they were reported in. Figure 5.1 shows the percentage distribution of reported General crime cases in three regions of Lesotho. According to the figure, almost half (51.9 percent) of the General crime cases were reported in Central Region whilst the Northern and Southern Regions reported the proportions of 33.3 and 14.8 percent of General crime cases respectively.

Figure 5.1: Percentage Distribution of Reported General Cases of Crime by Region – 2022



The section further discusses the types of reported General crime cases by Region. Hence, table 5.3 shows the percentage distribution of types of reported General crime cases by Region. As indicated by the table, Assault common, Road Traffic Act and Theft common crime cases were the most reported crimes in all the regions.

For Central Region, reported Theft common cases constituted the highest percentage of 27.5 percent, followed by Assault common and Road Traffic Act cases with the proportions of 26.7 and 19.2 percent respectively.

The same pattern is observed in Southern Region where Theft common reported the highest proportion (28.8 percent), followed by Assault common and Road Traffic Act cases with 28.3 and 15.4 percent respectively.

For Northern Region, reported Assault common cases constituted the majority (30.3 percent), followed by Theft common and Road Traffic Act cases with 25.8 and 17.1 percent respectively.

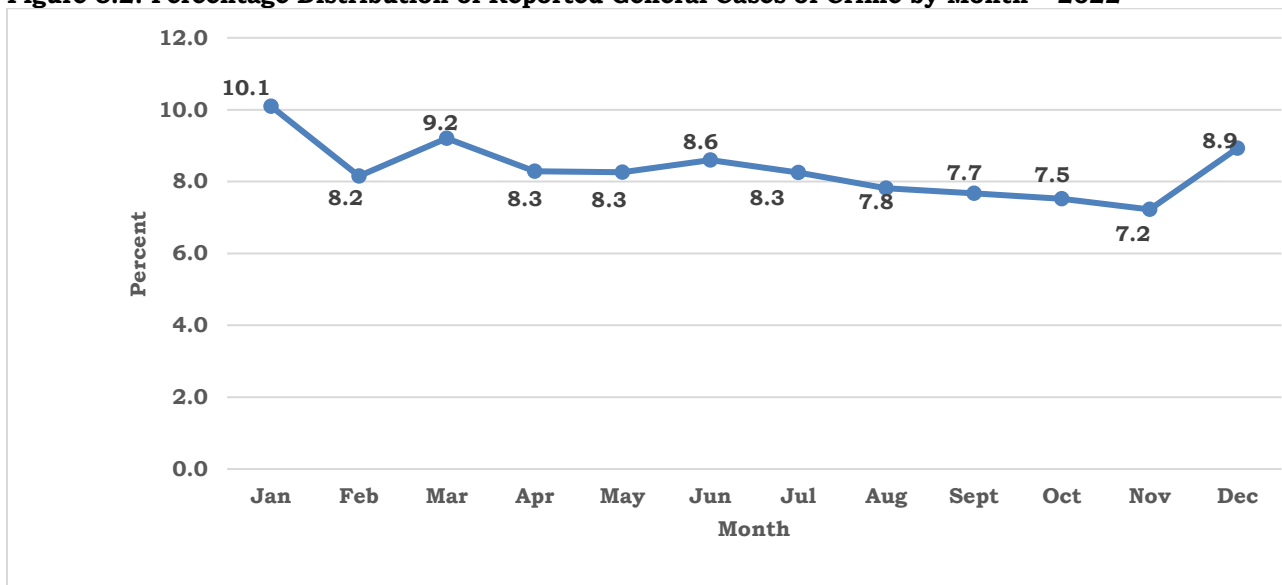
Table 5.3: Percentage Distribution of Types of Reported General Cases of Crime by Region - 2022

Reported General Crime Cases	Central Region	Northern Region	Southern Region
Arms & Ammunition	0.6	1.5	1.7
Arson	0.8	1.4	1.9
Assault Common	26.7	30.3	28.3
Internal security	1.0	1.6	1.3
Malicious Damage to Property	9.4	7.5	7.0
Public Health (Covid 19) Regulations	0.3	0.2	0.3
Road Traffic Act	19.2	17.1	15.4
Theft by False Pretenses	2.4	1.7	2.8
Theft Common	27.5	25.8	28.8
Theft from car	3.2	2.9	1.2
Threats of violence	1.8	2.0	1.8
Other	7.0	8.0	9.7
Total	100.0	100.0	100.0

5.4 Reported General Crime Cases by Month

General crime cases were further analysed by month in which they were reported. Hence, the percentage distribution of General crime cases reported by Month is illustrated in figure 5.2. As illustrated by the figure, the largest proportion of General crime cases was reported during the month of January with 10.1 percent. March reported 9.2 percent while December reported 8.9 percent. The remaining months reported General crime cases ranging from 7.2 to 8.6 percent with November reporting the lowest proportion of 7.2 percent.

Figure 5.2: Percentage Distribution of Reported General Cases of Crime by Month – 2022



This section further gives clarity on the types of General crime cases by month in which they were reported. Table 5.4 displays the percentage distribution of the types of reported General crime cases by Month. As revealed by the table, the types of General crime cases reported mostly in all the months of the year constituted cases of Assault common, Road Traffic Act and Theft common.

In January, Assault common cases reported the highest proportion (31.4) followed by reported Road Traffic Act and Theft common cases with 22.7 and 20.0 percent respectively. Internal security constituted the least proportion reported in January with 0.6 percent.

The same pattern is observed in the month of February where Assault common cases reported the highest percentage (30.0). Road Traffic Act and Theft common cases

followed with the proportions of 24.0 and 20.5 percent respectively, while Public Health (Covid 19) Regulations reported the least proportion reported with 0.1 percent.

On the other hand, the highest proportion of crime reported during the month of September was Theft common cases with 31.3 percent. Assault Common and Malicious Damage to Property cases followed with the proportions of 28.8 and 10.5 percent respectively. The remaining General crime cases reported during the month of September ranged from 0.6 to 9.6 percent despite the fact of Public Health (Covid 19) Regulations cases which has not being reported.

Furthermore, Assault common and Theft Common crime cases were reported mostly in October with the proportions of 30.1 percent each. This was followed by Road Traffic Act and Malicious Damage to Property cases with the proportions of 11.3 and 10.5 percent respectively.

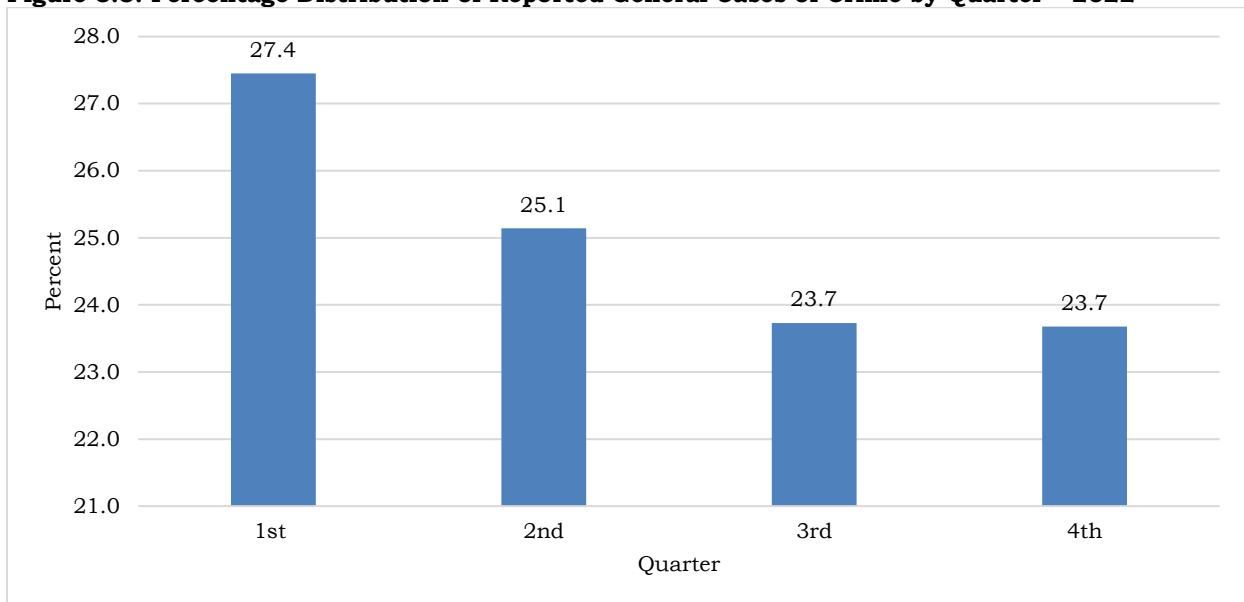
Table 5.4: Percentage Distribution of Types of Reported General Cases of Crime by Month - 2022

Reported General Crime Cases	Jan	Feb	Mar	Apr	May	Jun	Jul	Aug	Sept	Oct	Nov	Dec	Total
Arms & Ammunition	1.2	0.8	0.9	1.6	1.0	0.9	0.8	1.8	0.6	1.1	0.9	1.2	1.1
Arson	1.3	1.0	1.2	1.0	1.1	1.2	1.5	1.4	0.9	1.0	1.5	1.2	1.2
Assault Common	31.4	30.0	27.6	24.9	27.6	23.7	23.7	29.2	28.8	30.1	27.0	32.8	28.1
Internal security	0.6	2.3	2.2	0.8	1.1	1.0	1.0	1.5	1.1	1.0	1.1	1.2	1.2
Malicious Damage to Property	7.7	8.2	6.9	7.5	8.5	7.0	8.3	10.8	10.6	10.5	8.4	8.0	8.4
Public Health (Covid 19) Regulations	1.3	0.1	0.3	0.1	0.8	0.1	0.0	0.0	0.0	0.0	0.0	0.0	0.2
Road Traffic Act	22.7	24.0	22.7	26.5	18.5	21.7	20.3	12.0	9.4	11.3	10.7	11.9	17.9
Theft by False Pretences	2.1	1.8	2.2	1.8	1.5	3.2	2.8	1.7	2.4	2.1	2.1	2.8	2.2
Theft Common	20.0	20.5	24.8	26.4	26.6	28.6	29.5	28.7	31.3	30.1	33.9	28.0	27.1
Theft from car	3.2	2.4	2.8	1.9	2.4	2.7	2.4	2.5	3.8	3.2	3.7	3.2	2.8
Threats of violence	1.6	1.8	1.7	0.7	2.2	2.4	1.9	1.8	1.6	1.9	2.8	1.9	1.9
Other	6.7	7.2	6.8	6.9	8.5	7.8	7.8	8.6	9.6	7.7	8.0	7.8	7.7
Total	100.0	100.0	100.0	100.0	100.0	100.0	100.0	100.0	100.0	100.0	100.0	100.0	100.0

5.5 Reported General Crime Cases by Quarter

This section presents the quarterly statistics on General crime cases reported in 2022. Thus, Figure 5.3 below illustrates quarterly percentage distribution of reported General crime cases. As illustrated by the figure, First quarter reported the highest proportions of about 27.4 percent. Second quarter followed with the proportion of 25.0 percent while Third and Fourth quarters remained the same with the reported proportions of 23.7 percent each.

Figure 5.3: Percentage Distribution of Reported General Cases of Crime by Quarter – 2022



5.6 Types of Reported General Cases of Crime by Quarter

The main focus of this section is to look at the types of reported General crime cases by quarter. Hence, the percentage distribution of reported General crime cases by quarter is presented in table 5.5 below. As depicted by the table, the top three leading types of General cases of crime reported throughout quarters of 2022 year are Assault common, Road Traffic Act, and Theft Common.

First quarter reported the largest proportion of Assault common cases with 29.7 percent followed by Road Traffic Act and Theft common cases with 23.1 and 21.8 percent respectively. Public Health (Covid 19) Regulations cases reported the least percentage of 0.6 percent.

For second quarter, Theft Common cases recorded higher percentage (27.2 percent), followed by Assault common and Road Traffic Act cases with 25.4 and 22.2 percent

respectfully. Public Health (Covid 19) Regulations cases reported the least percentage of 0.3 percent.

About 30.5 percent (Theft common) and 30.1 percent (Assault common) of crime cases were reported in Fourth quarter. Road Traffic Act and Malicious Damage to Property followed with the proportions of 11.4 and 8.9 percent respectively. The remaining General crime cases reported in Fourth quarter ranged from 1.1 to 7.8 with Public Health (Covid 19) Regulations cases which was not reported in that quarter.

The same pattern was observed for third quarter where reported Theft Common cases took a lead with the highest percentage of 29.8 percent. This was followed by Assault Common and Road Traffic Act cases with 27.2 and 14.0 percent respectfully while Public Health (Covid 19) Regulations cases were also not reported.

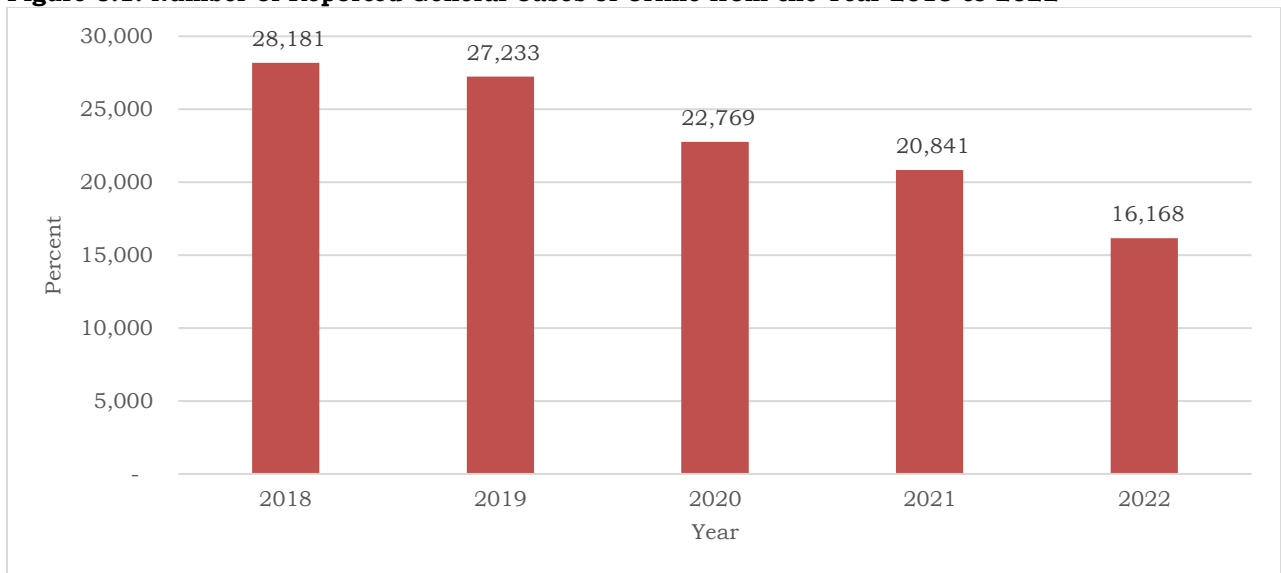
Table 5.5: Percentage Distribution of Reported General Cases by Quarter – 2022

Reported General Crime Cases	Quarter 1	Quarter 2	Quarter 3	Quarter 4
Arms & Ammunition	1.0	1.2	1.1	1.1
Arson	1.2	1.1	1.3	1.2
Assault Common	29.7	25.4	27.2	30.1
Internal security	1.6	1.0	1.2	1.1
Malicious Damage to Property	7.5	7.7	9.9	8.9
Public Health (Covid 19) Regulations	0.6	0.3	0.0	0.0
Road Traffic Act	23.1	22.2	14.0	11.4
Theft by False Pretences	2.1	2.2	2.3	2.4
Theft Common	21.8	27.2	29.8	30.5
Theft from car	2.8	2.3	2.9	3.3
Threats of violence	1.7	1.8	1.8	2.2
Other	6.9	7.7	8.6	7.8
Total	100.0	100.0	100.0	100.0

6.0 Trend in Reported General Crime Cases, 2018 - 2022

This section examines the level and trend in General crime cases reported from 2018 to 2022. Thus, Figure 6.1 depicts the number of reported General crime cases from the year 2018 to 2022. As indicated by the figure, proportion of reported General crime cases declined by 3.5 percent from 2018 to 2019. It further notably declines by 19.6 from 2019 to 2020, by 9.3 from 2020 to 2021 and by 28.9 percent from 2021 to 2022.

Figure 6.1: Number of Reported General Cases of Crime from the Year 2018 to 2022



7.0 Summary

General crime cases comprised of Arms & ammunition, Arson, Assault Common, Child protection Act, Internal Security, Malicious Damage, Public Health (covid-19) Regulation, Road Traffic Act, Theft by False Pretence, Theft Common, Theft from Car, Threats of Violence, and Others. There were 16,168 General crime cases reported from the 1st January to 31st December, 2022.

Of all the 16,168 reported General crime cases, Assault common, Road Traffic Accidents and Theft Common were the commonly reported crimes across the country. The General crime cases were reported mostly in Maseru Urban. Hence, Central Region reported the majority of General crime cases. Furthermore, majority of General crime cases were reported in January, resulting First Quarter of the year reporting majority of General crime cases. There was a decrease in a number of reported General crime cases from 2018 to 2022.

8.0 Annex 1: Grouping of Cases of Crime

Group 1: Serious Cases of Crime

These comprises; Armed robbery, Assault GBH (Assault with intend to cause Grievous Bodily Harm), Attempted murder, Car theft, Fraud, House Breaking, Human Trafficking, Murder, Robbery, Sexual Offence and Stock theft.

Group 2: General Crime Cases

They entail, Arms & ammunition, Arson, Assault Common, Child protection Act, Internal Security, Malicious Damage, Public Health (covid-19) Regulation, Road Traffic Act, Theft by False Pretence, Theft Common, Theft from Car, Threats of Violence, and Others.

Annex 2: Reported Serious Cases of Crime

Table 1: Number of Reported Serious Cases of Crime – 2022

Serious Crime Cases	Number
Armed robbery	475
Assault GBH	863
Attempted Murder	298
Car theft	171
Fraud	507
House Breaking	4,410
Human Trafficking	19
Murder	944
Robbery	689
Sexual Offence	1,383
Stock Theft	2,180
Total	11,939

Table 2: Number of Reported Serious Cases of Crime by Policing Districts – 2022

Policing district	Armed robbery	Assault GBH	Attempted Murder	Car theft	Fraud	House Breaking	Human Trafficking	Murder	Robbery	Sexual Offence	Stock Theft	Total
Maseru Urban	243	135	108	119	330	1,646	3	181	379	328	100	3,572
Maseru Rural	44	69	32	10	9	569	2	166	56	186	429	1,572
Thaba-Tseka	6	72	12	0	17	124	1	49	13	81	285	660
Berea	23	67	41	7	8	314	1	97	46	133	269	1,006
Leribe	95	109	27	20	45	713	5	160	71	167	356	1,768
Botha-Bothe	13	68	11	1	20	184	1	40	14	78	214	644
Mokhotlong	2	48	7	2	31	138	2	45	12	76	281	644
Mafeteng	33	98	41	11	18	332	1	110	44	109	106	903
Mohale's Hoek	10	90	10	1	4	216	1	28	21	95	37	513
Quthing	2	50	5	0	12	70	0	28	24	60	20	271
Qacha's Nek	4	57	4	0	13	104	2	40	9	70	83	386
Total	475	863	298	171	507	4,410	19	944	689	1,383	2,180	11,939

Table 3: Number of Types of Reported Serious Cases of Crime by Region – 2022

Policing district	Central Region	Northern Region	Southern Region
Armed robbery	293	133	49
Assault GBH	276	292	295
Attempted Murder	152	86	60
Car theft	129	30	12
Fraud	356	104	47
House Breaking	2,339	1,349	722
Human Trafficking	6	9	4
Murder	396	342	206
Robbery	448	143	98
Sexual Offence	595	454	334
Stock Theft	814	1,120	246
Total	5,804	4,062	2,073

Table 4: Number of Reported Serious Cases by Quarter – 2022

Serious Crime Cases	1st Quarter	2nd Quarter	3rd Quarter	4th Quarter
Armed robbery	72	117	140	146
Assault GBH	262	181	201	219
Attempted Murder	87	77	61	73
Car theft	39	38	41	53
Fraud	125	126	141	115
House Breaking	997	1,139	1,115	1,159
Human Trafficking	5	8	3	3
Murder	230	216	243	255
Robbery	177	184	147	181
Sexual Offence	385	354	309	335
Stock Theft	487	589	598	506
Total	2,866	3,029	2,999	3,045

Table 5: Number of Reported Serious Cases of Crime from the Year 2018 to 2022

Year	Number
2018	13,507
2019	13,263
2020	12,144
2021	11,407
2022	11,939

Table 6: Number of Types of Reported Serious Cases of Crime by Month - 2022

Serious Crime Cases	Jan	Feb	Mar	Apr	May	Jun	Jul	Aug	Sept	Oct	Nov	Dec	Total
Armed robbery	21	29	22	44	36	37	47	63	30	50	42	54	475
Assault GBH	104	76	82	66	53	62	56	76	69	67	60	92	863
Attempted Murder	36	22	29	31	22	24	24	16	21	29	19	25	298
Car theft	11	11	17	19	3	16	25	9	7	11	20	22	171
Fraud	40	44	41	34	44	48	49	59	33	31	70	14	507
House Breaking	342	326	329	421	397	321	380	356	379	391	363	405	4,410
Human Trafficking	1	2	2	4	3	1	1	0	2	3	0	0	19
Murder	96	69	65	72	84	60	86	91	66	70	62	123	944
Robbery	60	56	61	63	56	65	77	44	26	56	57	68	689
Sexual Offence	130	119	136	122	117	115	106	116	87	107	88	140	1,383
Stock Theft	133	183	171	168	222	199	206	216	176	152	147	207	2,180
Total	974	937	955	1,044	1,037	948	1,057	1,046	896	967	928	1,150	11,939

Annex 3: Reported General Cases of Crime

Table 1: Number of Reported General Cases of Crime – 2022

General Crime Cases	Number
Arms & Ammunition	172
Arson	193
Assault Common	4,546
Internal security (Abusive Language)	202
Malicious Damage to Property	1,365
Public Health (Covid 19) Regulations	40
Road Traffic Act	2,901
Theft by False Pretences	358
Theft Common	4,382
Theft from car	458
Threats of violence	300
Other	1,251
Total	16,168

Table 2: Number of Types of Reported General Cases of Crime by Region – 2022

General Crime Cases	Central Region	Northern Region	Southern Region
Arms & Ammunition	52	80	40
Arson	71	77	45
Assault Common	2,240	1,630	676
Internal security (Abusive Language)	88	84	30
Malicious Damage to Property	793	404	168
Public Health (Covid 19) Regulations	22	11	7
Road Traffic Act	1,614	918	369
Theft by False Pretences	199	93	66
Theft Common	2,305	1,389	688
Theft from car	272	157	29
Threats of violence	149	109	42
Other	588	431	232
Total	8,393	5,383	2,392

Table 3: Number of Reported General Cases of Crime by Policing Districts – 2022

General Crime Cases	Maseru Urban	Maseru Rural	Thaba-Tseka	Berea	Leribe	Botha-Bothe	Mokhotlong	Mafeteng	Mohale's Hoek	Quthing	Qacha's Nek	Total
Arms & Ammunition	0	28	24	14	23	19	24	17	13	4	6	172
Arson	18	31	22	21	33	11	12	18	10	11	6	193
Assault Common	1,444	581	215	425	676	218	311	231	183	148	114	4,546
Internal security	14	39	35	24	34	4	22	23	1	0	6	202
Malicious Damage to Property	578	148	67	129	160	61	54	71	52	23	22	1,365
Public Health (Covid 19) Regulations	22	0	0	1	1	0	9	1	0	0	6	40
Road Traffic Act	1,248	249	117	309	398	140	71	216	84	8	61	2,901
Theft by False Pretences	155	19	25	25	58	10	-	50	13	0	3	358
Theft Common	1,848	308	149	299	654	222	214	452	127	62	47	4,382
Theft from car	255	12	5	19	65	47	26	16	7	0	6	458
Threats of violence	103	27	19	24	45		40	19	19	4	0	300
Other	379	108	101	64	147	97	123	120	57	30	25	1,251
Total	6,064	1,550	779	1,354	2,294	829	906	1,234	566	290	302	16,168

Table 4: Number of Types of Reported General Cases of Crime by Month – 2022

General Crime Cases	Jan	Feb	Mar	Apr	May	Jun	Jul	Aug	Sept	Oct	Nov	Dec	Total
Arms & Ammunition	20	10	13	21	14	12	11	23	7	13	10	18	172
Arson	22	13	18	13	15	16	20	18	11	12	17	18	193
Assault Common	512	396	411	333	369	329	316	369	357	366	315	473	4,546
Internal security	10	30	32	11	15	14	14	19	14	12	13	18	202
Malicious Damage to Property	125	108	102	100	114	97	111	136	131	128	98	115	1,365
Public Health (Covid 19) Regulations	22	1	4	1	11	1	0	0	0	0	0	0	40
Road Traffic Act	371	316	338	355	247	301	271	151	116	138	125	172	2,901
Theft by False Pretences	34	24	33	24	20	44	37	22	30	25	25	40	358
Theft Common	327	270	369	354	356	397	393	362	388	366	396	404	4,382
Theft from car	53	31	41	25	32	37	32	32	47	39	43	46	458
Threats of violence	26	24	26	9	30	33	25	23	20	23	33	28	300
Other	110	95	101	93	113	109	104	108	119	94	93	112	1,251
Total	1,632	1,318	1,488	1,339	1,336	1,390	1,334	1,263	1,240	1,216	1,168	1,444	16,168

Table 5: Number of Reported General Cases by Quarter – 2022

General Crime Cases	Quarter 1	Quarter 2	Quarter 3	Quarter 4
Arms & Ammunition	43	47	41	41
Arson	53	44	49	47
Assault Common	1,319	1,031	1,042	1,154
Internal security	72	40	47	43
Malicious Damage to Property	335	311	378	341
Public Health (Covid 19) Regulations	27	13	-	-
Road Traffic Act	1,025	903	538	435
Theft by False Pretences	91	88	89	90
Theft Common	966	1,107	1,143	1,166
Theft from car	125	94	111	128
Threats of violence	76	72	68	84
Other	306	315	331	299
Total	4,438	4,065	3,837	3,828

Table 6: Number of Reported General Cases of Crime from the Year 2018 to 2022

Year	Number
2018	28,181
2019	27,233
2020	22,769
2021	20,841
2022	16,168